

REDHAWK SE & REDHAWK

COMFORT FOR THE ROAD AHEAD



2+3
YEAR | YEAR
WARRANTY

INTERIOR DESIGN



BLACKSTONE



Wood



Floor



Countertop



Main Fabric



Furniture

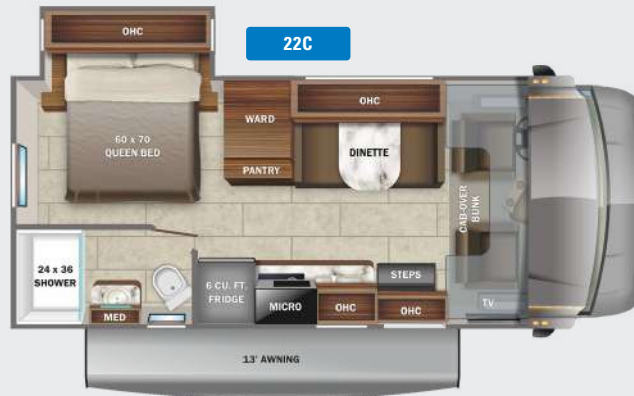


REDHAWK SE

22A



22C



27N



EXTERIOR



Standard Graphics Package

STANDARDS & OPTIONS

CUSTOMER VALUE PACKAGE

One-piece, seamless, fiberglass front cap
Heated holding tanks (12V pads)
Electric patio awning
Black holding tank sprayer
Backup camera
6 cu. ft. flush-mount refrigerator
LED HDTV

DRIVING

Chevy® 4500 chassis
GVWR- 14,200 lb.
GCWR- 20,000 lb.
6.6L Vortec V8 401 HP engine with
464 ft.-lb. torque
Hydra-matic 6-speed automatic
transmission with overdrive
120-amp alternator
E-rated highway tires- LT225/75R16
Power anti-lock brakes with
power steering
5,000 lb. hitch with 500 lb. tongue
capacity and 7-pin plug
12V chassis battery
57 gal. fuel tank
Remote-controlled, side-view mirrors
Driver and passenger airbags
Power windows and door locks
Tilt steering wheel
A/C and cruise control
Auxiliary start switch
Privacy curtains for cab area

EXTERIOR

StrongholdVBL™ roof, floor and sidewalls
Bead-foam insulation (R-24 max roof, R-9
max floor, R-5 max walls)

TPO laminated roof
Aluminum running boards
Fiberglass exterior walls with
vinyl graphics
Leveling jack prep
Entrance door with industry's largest
travel-view window
Electric-powered entrance step with
integrated house battery compartment
12V house battery
12.2 gal. propane tank (41 lb.)
LP quick-connect hookup
Exterior utility center
Winterization drain system
Outside shower
12V demand water pump
Onan® 4,000-watt MicroQuiet™
gas generator
Transfer switch with reverse
polarity protection
30-amp electrical service
Solar prep
Third brake light
Porch light
Roof ladder
4 in. bumper tube sewer hose storage

INTERIOR

84 in. ceiling height
High-intensity, recessed LED ceiling lights
Hardwood cabinet doors
Ball-bearing drawer guides
Jayco-exclusive, easy-operation legless
dinette table
2-point lap safety belts in all designated
seating locations
Interior entrance door grab handle

Interior command center
Pleated blackout shades
13,500 BTU ducted A/C
31,000 BTU auto-ignition furnace
6 gal. gas/electric DSI auto-ignition
water heater
Cable TV hookup with RG-6 coax
Digital antenna with signal booster
2-burner cooktop with flush cover
Convection microwave oven
Stainless steel kitchen sink
Decorative kitchen backsplash
Water filtration system
Shower with decorative ABS surround
and skylight
Stainless steel bathroom sink
Toilet with foot flush
Queen-size bed with bedspread
Under-bed storage (select models)
Large wardrobes
Overhead bunk with 750 lb. capacity
Smoke alarm
Carbon monoxide detector

OPTIONS

Hydraulic leveling jacks
190W solar panel with dual controller and
second house battery

FLOORPLAN	GVWR (lbs.)	GCWR (lbs.)	WHEEL BASE	OVERALL LENGTH	EXTERIOR HEIGHT WITH SATELLITE AND A/C	EXTERIOR WIDTH	INTERIOR HEIGHT	FRESH WATER CAPACITY (gal.)	GRAY WASTE WATER CAPACITY (gal.)	BLACK WASTE WATER CAPACITY (gal.)
22A	14,200	20,000	159"	25' 2"	11' 6"	100"	84"	44	40	32
27C	14,200	20,000	159"	25' 2"	11' 6"	100"	84"	44	40	31
22N	14,200	20,000	191"	30' 3"	11' 6"	100"	84"	39	41	31

OPTIONS

A



Theater Sofa

24B

OPTIONS: A



25R

OPTIONS: A



26M

OPTIONS: A



26XD

OPTIONS: A



29XK

OPTIONS: A



31F

OPTIONS: A



EXTERIOR



Standard Graphics Package

STANDARDS & OPTIONS

CUSTOMER VALUE PACKAGE

JRIDE®: Computer-balanced driveshaft, standard front and rear stabilizer bars, Hellwig® helper springs, rubber isolation body mounts
One-piece, seamless, fiberglass front cap
Heated holding tanks (12V pads)
Electric patio awning with LED lights
Black holding tank sprayer
Sony® infotainment center with Apple® CarPlay™ and Android Auto™
Backup and side-view cameras
LED HD Smart Fire TV in living area
8 cu. ft. flush-mount, double-door refrigerator

DRIVING

Ford® E-450 chassis
GVWR- 14,500 lb.
GCWR- 22,000 lb.
7.3L V-8 350 HP engine with 468 ft.-lb. torque
6-speed TorqShift® series transmission with overdrive
210-amp alternator
E-rated highway tires- LT225/75R16
Tire pressure monitoring system (TPMS)
Power anti-lock brakes with power steering
7,500 lb. hitch with 750 lb. tongue capacity and 7-pin plug
12V chassis battery
55 gal. fuel tank
Remote-controlled, side-view mirrors
Swivel driver and passenger seats
Driver and passenger airbags
Power windows and door locks
Tilt steering wheel
A/C and cruise control
Auxiliary start switch
Privacy curtains for cab area

EXTERIOR

StrongholdVBL™ roof, floor and sidewalls
Bead-foam insulation (R-24 max roof, R-9 max floor, R-5 max walls)
TPO laminated roof
Aluminum running boards
Fiberglass exterior walls with vinyl graphics
Leveling jack prep
Frameless windows
Remote keyless cab entry
Entrance door with industry's largest travel-view window
Electric-powered entrance step with integrated house battery compartment
12V house battery
(2) high-output, marine-grade exterior speakers
Slideout cover awnings
Pass-through storage compartment with light (select models)
12.2 gal. propane tank (41 lb.)
LP quick-connect hookup

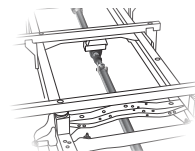
Exterior utility center
Winterization drain system
Outside shower
12V demand water pump
Onan® 4,000-watt MicroQuiet™ gas generator with auto-changeover
Transfer switch with reverse polarity protection
30-amp electrical service
Solar prep
Third brake light
Porch light
Roof ladder
4 in. bumper tube sewer hose storage

INTERIOR

84 in. ceiling height
High-intensity, recessed LED ceiling lights
LED-lit slideout fascia
Hardwood cabinet doors and drawers
Ball-bearing drawer guides
Jayco-exclusive, easy-operation legless dinette table
2-point lap safety belts in all designated seating locations
Interior entrance door grab handle
Interior command center
Pleated blackout shades
15,000 BTU ducted A/C
31,000 BTU auto-ignition furnace
6 gal. gas/electric DSI auto-ignition water heater
Prep for satellite dish
Cable TV hookup with RG-6 coax
Digital antenna with signal booster
Furrion® all-in-one cooktop and oven
Residential-size microwave
Stainless steel kitchen sink
Decorative kitchen backsplash
Pop-up charging station with 110 outlet and USB plugs
LED-lit, pressed countertops
Water filtration system
Shower with decorative ABS surround and skylight
Stainless steel bathroom sink
Toilet with foot flush
Vent fan in bathroom
Queen-size bed with bedspread
Under-bed storage (select models)
Large wardrobes
Overhead bunk with 750 lb. capacity and safety net with 300 lb. capacity
Bunks with industry-exclusive 300 lb. capacity each (31F)
Smoke alarm
Carbon monoxide detector

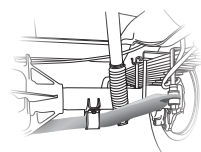
OPTIONS

Hydraulic leveling jacks
Theater seating (25R, 26XD, 29XK, 31F)
190W solar panel with dual controller and second house battery
Dual A/C units with power management system (26M, 29XK, 31F)
Folding windshield sun shade



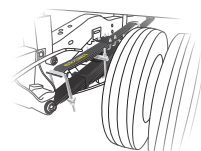
COMPUTER-BALANCED DRIVESHAFT

Ensures smooth and efficient power transfer to the wheels



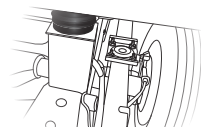
STANDARD FRONT & REAR STABILIZER BARS

Reduces the body roll of a vehicle during fast cornering or over road irregularities



HELLWIG® HELPER SPRINGS

Work with the chassis' existing springs to give the RV more support, improving stability under heavy loads



RUBBER ISOLATION MOUNTS

Positioned near the tires to absorb road shock, dampen noise and minimize vibrations

FLOORPLAN	GVWR (lbs.)	GCWR (lbs.)	WHEEL BASE	OVERALL LENGTH	EXTERIOR HEIGHT WITH SATELLITE AND A/C	EXTERIOR WIDTH	INTERIOR HEIGHT	FRESH WATER CAPACITY (gal.)	GRAY WASTE WATER CAPACITY (gal.)	BLACK WASTE WATER CAPACITY (gal.)
24B	14,500	22,000	181"	26' 8"	11' 6"	100"	84"	43	40	31
25R	14,500	22,000	181"	28' 8"	11' 6"	100"	84"	38	41	32
26M	14,500	22,000	181"	28' 8"	11' 6"	100"	84"	44	41	32
26XD	14,500	22,000	181"	28' 8"	11' 6"	100"	84"	44	40	31
29XK	14,500	22,000	223"	32' 6"	11' 6"	100"	84"	44	41	32
31F	14,500	22,000	223"	32' 6"	11' 6"	100"	84"	47	41	31

INTERIOR DESIGN



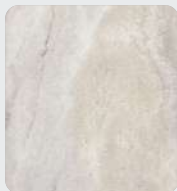
BRIDGEPORT



Wood



Floor



Countertop

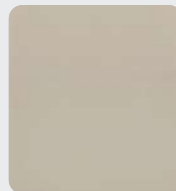


Main Fabric



Furniture

MODERN FARMHOUSE



Wood



Floor



Countertop



Main Fabric



Furniture

THE JAYCO DIFFERENCE



1. **One-piece seamless fiberglass front cap** for increased durability and protection
2. **750 lb. overhead bunk capacity** offers nearly 250 lbs. more than the industry average for greater safety and peace of mind
3. **Integrated electric step** maximizes ground clearance and floor space
4. **Integrated third brake light** improves safety on the road
5. **Seatbelts in every designated seating position** secure the most precious cargo
6. **Frameless windows** make exterior maintenance easier than ever and give the unit a sleek, modern look (N/A on Redhawk SE)
7. **Stronghold VBL™** vacuum-bonded, laminated floor, sidewalls and roof



TRAVEL WITH CONFIDENCE • NO ONE OFFERS A BETTER WARRANTY

At Jayco, we build our RVs to handle every adventure, then back them with our industry-leading 2+3 limited warranty. Our 2-year limited warranty has you covered for 2 camping seasons. That's 730 days. In addition, our 3-year structural limited warranty has you covered for 3 camping seasons or 1,095 days. You won't find a better limited warranty in the business, because the only strings that we attach are those that deliver the ultimate in reliability. That's the Jayco difference. So go explore. For a copy of our 2-year limited + 3-year structural limited warranty with complete terms and conditions, please contact your local Jayco dealer.

Meet your Jayco Dealer



Scan QR
code for
specification
definitions



Some specs at the time of print may include estimates.
For the most updated information, please visit
Jayco.com/redhawk-se or Jayco.com/redhawk

Jayco, Inc. | P.O. Box 460 | Middlebury, IN 46540

See dealer for further information and prices. All information in this brochure and on www.jayco.com is the latest available at the time of publication approval. Jayco reserves the right to make changes and to discontinue models without notice or obligation. Photography may show optional equipment or props used for decoration purposes only. RVs built for sale in Canada may differ to conform to Canadian codes. JAYCO and the JAYCO BIRD IN FLIGHT are registered trademarks of Jayco, Inc. Printed in USA 9/21 ©2021 Jayco, Inc. 257066

Jayco - Part of the Jayco Family of Companies